



[www.genefist.com](http://www.genefist.com)

## Product Information

GeneFist™ series

### 3-color Regular Range Protein Marker (9-180 kDa)

#### GF6616

Size: 250  $\mu$ l x 1  
5  $\mu$ l per well for 100 applications

## Storage

4°C for 3 months  
-20°C for 24 months

## Loading Volume

- **3  $\mu$ l** or **5  $\mu$ l** per loading for clear visualization during electrophoresis on a 15-well or 10-well mini-gel.
- **1.5~2.5  $\mu$ l** per well for general Western blotting transfer.
- Apply more for a thicker (> 1.5 mm) or larger gel.

## Description

The GF6616 GeneFist™ 3-color Regular Range Protein Marker is a ready to use three-color protein standard with 10 pre-stained proteins covering a wide range of molecular weights from 10 to 180 kDa (9 to 170 kDa in Bis-Tris (MOPS) buffer and 10 to 170 kDa in Bis-Tris (MES) buffer). Proteins are covalently coupled with a blue chromophore except for two reference bands (one **green** and one **red** band at 25 kDa and 75 kDa respectively) when separated on SDS-PAGE (Tris-Glycine buffer).

The GF6616 GeneFist™ 3-color Regular Range Protein Marker is designed for monitoring protein separation during SDS-polyacrylamide gel electrophoresis, verification of Western transfer efficiency on membranes, (PVDF, nylon, or nitrocellulose) and for approximating the size of proteins.

The marker is supplied in gel loading buffer and is ready to use. **Do NOT heat, dilute, or add reducing agents before loading.**


## Contents

Approximately 0.1~0.4 mg/ml of each protein in the buffer (20 mM Tris-phosphate (pH 7.5 at 25°C), 2 % SDS, 0.2 mM Dithiothreitol, 3.6 M Urea, and 15 % (v/v) Glycerol).

## Guide for Molecular Weight Estimation

Migration patterns and approximate MWs (kDa) of GF6616 GeneFist™ 3-color Regular Range Protein Marker in different electrophoresis conditions are listed below:

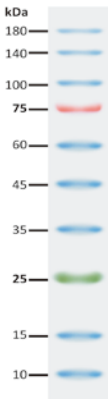
Band	Color	TRIS-GLYCINE	BIS-TRIS (MOPS)	BIS-TRIS (MES)
1	Blue	180	170	170
2	Blue	140	130	130
3	Blue	100	93	93
4	Red	75	70	72
5	Blue	60	53	53
6	Blue	45	41	42
7	Blue	35	30	30
8	Green	25	22	23
9	Blue	15	14	14
10	Blue	10	9	10





## 3-color Regular Range Protein Marker

### GF6616



**Note.** The apparent molecular weight (kDa) of each protein has been determined by calibration against an unstained protein standard; supplemental data should be considered for more accurate adjustments in different electrophoresis conditions.

## **Quality Control**

Under suggested conditions, GF6616 GeneFist™ 3-color Regular Range Protein Marker resolves 10 major bands in SDS-PAGE (Tris-Glycine, MOPS, and MES buffer) and after Western blotting transfer to a nitrocellulose membrane.

## **Other information**

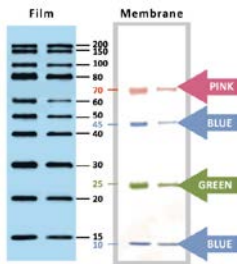
GENEFIST Technology, Inc. claims all warranties with respect to this document, expressed or implied, including but not limited to those of merchantability or fitness for a particular purpose. In no event shall GENEFIST Technology, Inc. be liable, whether in contract, tort, warranty, or under any statute or any other basis for special, incidental, indirect, punitive, multiple or consequential damages in connection with or arising from this document, including but not limited to the use thereof.

Caution: Not intended for human or animal diagnostic or therapeutic uses.

## Related Products

- GF6150 GeneFist All Blue Regular Range Protein Marker, 250  $\mu\text{l}$   $\times$  2
- GF6160 GeneFist All Blue Regular Range Plus Protein Marker, 250  $\mu\text{l}$   $\times$  2
- GF6170 GeneFist All Blue Broad Range Protein Marker, 250  $\mu\text{l}$   $\times$  2
- GF6240 GeneFist Pink Blue Protein Marker, 250  $\mu\text{l}$   $\times$  2
- GF6616 GeneFist Enhanced 3-color Regular Range Protein Marker, 250  $\mu\text{l}$   $\times$  2
- GF6619 GeneFist 3-color High Range Protein Marker, 250  $\mu\text{l}$   $\times$  2
- GF6261 GeneFist Enhanced 3-color High Range Protein Marker, 250  $\mu\text{l}$   $\times$  2
- GF6270 GeneFist 3-color Broad Range Protein Marker, 250  $\mu\text{l}$   $\times$  2
- GF6280 GeneFist 3-color Extra Range Protein Marker, 250  $\mu\text{l}$   $\times$  2
- GF6500 GeneFist 3-color Pre-stained Protein Ladder, Regular Range, 250  $\mu\text{l}$   $\times$  2
- GF6510 GeneFist 3-color Pre-stained Protein Ladder, High Range, 250  $\mu\text{l}$   $\times$  2
- GF6520 GeneFist 3-color Pre-stained Protein Ladder, Broad Range, 250  $\mu\text{l}$   $\times$  2

- GF2100 GeneFist Protein Fluorescent Staining Dye (Red, 1,000X), 1 ml
- GF5110 GeneFist 50 bp DNA Ladder, 500 µl
- GF5220 GeneFist 100 bp DNA Ladder II, 500 µl
- GF5310 GeneFist 1 KB (0.25-10 kb) DNA Ladder, 500 µl
- GF5510 GeneFist Super Range DNA Ladder, (50 bp-25 kb), 500 µl
- GF3010 GeneFist Blue Light LED epi-illuminator, AC 100-240V, 50/60Hz
- GF1100 GeneFist Western Marker I, 250 µl



GeneFist Western Marker I